

Table S1 GenBank accessions of the sequences used in the present study

No.	Taxa	<i>trnL-trnF</i>	ITS
1	<i>Allocheilos guangxiensis</i>	HQ632897.1	HQ632994.1
2	<i>Gyrocheilos chorisepalus</i>	HQ632900.1	HQ632997.1
3	<i>Gyrocheilos lasiocalyx</i>	HQ632901.1	HQ632998.1
4	<i>Gyrocheilos retrotrichus</i> 1	HQ632902.1	HQ632999.1
5	<i>Gyrocheilos retrotrichus</i> 2	HQ632903.1	HQ633000.1
6	<i>Lysionotus chingii</i>	FJ501498.1	FJ501332.1
7	<i>Lysionotus petelotii</i>	FJ501496.1	HQ632974.1
8	<i>Oreocharis auricula</i>	GU350672.1	DQ912664.1
9	<i>Oreocharis benthamii</i>	JF697584.1	NA
10	<i>Oreocharis farreri</i>	JF697585.1	JF697573.1
11	<i>Oreocharis jiangxiensis</i>	HQ632933.1	HQ633029.1
12	<i>Oreocharis lancifolia</i>	HQ632924.1	HQ633020.1
13	<i>Oreocharis mileensis</i> 1	HQ327444.1	HQ327460.1
14	<i>Oreocharis mileensis</i> 2	HQ632928.1	HQ633024.1
15	<i>Oreocharis mileensis</i> 3	JF697587.1	JF697575.1
16	<i>Oreocharis primuliflora</i>	HQ632923.1	HQ633019.1
17	<i>Oreocharis xiangguiensis</i>	HQ632932.1	HQ633028.1
18	<i>Petrocodon ainsliifolius</i>	NA	HQ633038.1
19	<i>Petrocodon coccineus</i> 1	KF202299.1	NA
20	<i>Petrocodon coccineus</i> 2	FJ501516.1	FJ501341.1
21	<i>Petrocodon coriaceifolius</i>	HQ632943.1	HQ633039.1
22	<i>Petrocodon dealbatus</i> 1	JX506767.1	JX506959.1
23	<i>Petrocodon dealbatus</i> 2	JF697590.1	JF697578.1
24	<i>Petrocodon dealbatus</i> 3	FJ501537.1	FJ501358.1
25	<i>Petrocodon dealbatus</i> 4	NA	GU350636.1
26	<i>Petrocodon ferrugineus</i>	HQ632946.1	HQ633043.1
27	<i>Petrocodon guangxiensis</i>	JX506791.1	JX506899.1
28	<i>Petrocodon hancei</i> 1	GU350667.1	NA
29	<i>Petrocodon hancei</i> 2	HQ632944.1	HQ633041.1
30	<i>Petrocodon hechiensis</i>	HQ632942.1	HQ633036.1
31	<i>Petrocodon hispidus</i> 1	KF202300.1	NA
32	<i>Petrocodon hispidus</i> 2	KF202301.1	NA
33	<i>Petrocodon integrifolius</i>	HQ632940.1	HQ633037.1
34	<i>Petrocodon laxicymosus</i>	KC765117.1	KC765115.1
35	<i>Petrocodon lithophilus</i>	KF202303.1	NA
36	<i>Petrocodon longgangensis</i>	KC765116.1	KC765114.1
37	<i>Petrocodon lui</i> 1	In prepare	In prepare

No.	Taxa	<i>trnL-trnF</i>	ITS
38	<i>Petrocodon lui</i> 2	HQ632938.1	HQ633035.1
39	<i>Petrocodon niveolanosus</i>	JF697588.1	JF697576.1
40	<i>Petrocodon pseudocoriaceifolius</i> 1	JX506741.1	JX506852.1
41	<i>Petrocodon pseudocoriaceifolius</i> 2	In prepare	In prepare
42	<i>Petrocodon pulchriflorus</i>	KX579059.1	KX579058.1
43	<i>Petrocodon retroflexus</i>	KX579061.1	KX579060.1
44	<i>Petrocodon scopulorum</i>	HQ632947.1	HQ633044.1
45	<i>Petrocodon</i> sp. 1	HQ632945.1	HQ633042.1
46	<i>Petrocodon</i> sp. 2	JF697589.1	JF697577.1
47	<i>Petrocodon</i> sp. 3	HQ632941.1	NA
48	<i>Petrocodon tiandengensis</i>	JX506850.1	JX506960.1
49	<i>Petrocodon viridescens</i> 1	KF202304.1	NA
50	<i>Petrocodon viridescens</i> 2	HQ632939.1	HQ633036.1
51	<i>Primulina gemella</i>	FJ501523.1	FJ501345.1
52	<i>Primulina glandulosa</i>	HQ632948.1	HQ633045.1
53	<i>Primulina heterotricha</i>	DQ872816.1	DQ872826.1
54	<i>Primulina laxiflora</i>	JX506801.1	JX506909.1
55	<i>Primulina longzhouensis</i>	JX506810.1	JX506918.1
56	<i>Primulina mollifolia</i>	JX506755.1	JX506866.1
57	<i>Primulina ningmingensis</i>	JX506822.1	JX506931.1
58	<i>Primulina pteropoda</i>	DQ872817.1	DQ872827.1
59	<i>Primulina renifolia</i>	JX506851.1	JX506737.1
60	<i>Primulina repanda</i>	AJ492292.1	FJ501351.1
61	<i>Primulina</i> sp.	HQ632949.1	NA
62	<i>Primulina swinglei</i>	JX506841.1	JX506950.1
63	<i>Streptocarpus parviflorus</i>	HQ718941.1	HQ719021.1

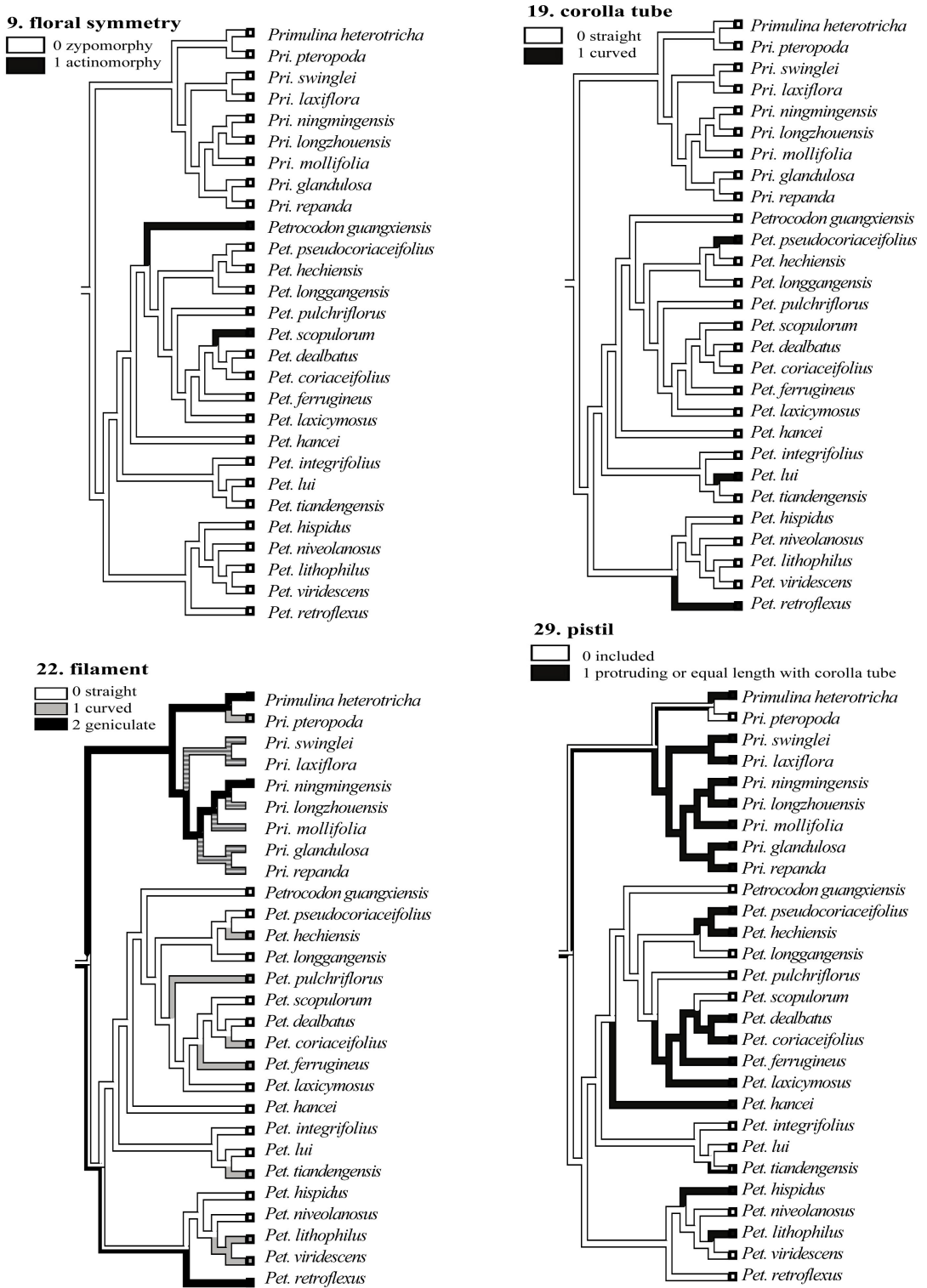


Fig. S1 Evolutionary trends of four selected floral traits, showing highly homoplasious evolution