

目次

国家重点保护野生植物研究 专题

珍稀濒危飘带兜兰叶绿体全基因组种内变异研究 高鑫祯, 唐露, 汪雨, 邵士成, 罗艳(1)

极小种群植物川柿叶绿体基因组特征与系统发育分析 杨楠, 王奥, 张子晨, 赵良成(15)

珍稀濒危植物越南小花金花茶的叶绿体基因组特征分析 邓永彪, 张进, 蓝伦礼, 赵博(30)

两种珍稀白蝶兰属(兰科)叶绿体基因组比较分析 汪雨, 唐露, 邵士成, 马长乐, 李健, 罗艳(43)

四季花金花茶花芽分化进程及叶片内源激素变化 江海都, 孙菲菲, 秦惠珍, 唐健民, 韦霄, 柴胜丰(56)

不同温度下 PEG 模拟干旱对濒危植物狭叶坡垒种子萌发的影响
..... 梁惠子, 杨继生, 覃毅, 潘韦虎, 肖玉菲, 黄荣林, 王仁杰, 蒋焱, 刘雄盛(68)

云南火焰兰的花形态和花药发育的胚胎学特征 王乐骋, 陶凯锋, 朱永, 张锦, 罗艳, 李璐(77)

两种玉凤花属植物的花结构和合蕊柱超微特征及其分类学意义
..... 陶凯锋, 朱永, 王乐骋, 张颖锋, 李璐(89)

紫纹兜兰的花形态和双雄蕊花药发育及分类学意义
..... 朱永, 黄家林, 陶凯锋, 王乐骋, 张锦, 李璐(102)

三种地宝兰属植物叶片解剖结构及光合特性的比较研究
..... 许爱祝, 江海都, 浦乾琨, 韦霄, 韦宇静, 罗亚进, 柴胜丰(113)

峨眉拟单性木兰雄性不育的细胞形态学及生理生化特性研究
..... 余道平, 李策宏, 李小杰, 陈绪玲, 谢孔平(126)

蒜头果幼苗衰退过程中组织养分含量变化特征 陈秋平, 李云驹, 李悦, 薛瑞娟, 李爱荣(137)

施肥对毛红椿幼林生长及叶片生理特征的影响
..... 潘俊彬, 刘远生, 张露, 程强强, 王健, 贾婷, 吴云燕, 郭春兰(147)

珍稀濒危沉水植物水菜花传粉生物学研究 王銮凤, 张同同, 向文倩, 梁惠婷, 谭珂, 申益春(157)

贵州北盘江流域观赏兰科植物及其功能群研究 侯欢欢, 安明态(167)

川黔地区濒危植物红豆树种群结构与数量动态特征
..... 王明彬, 韦小丽, 韦忆, 王嫚, 余大龙, 袁刚毅(179)

综述

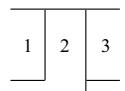
虎耳草属的资源分类及育种进展 唐世梅, 张霞, 陈倩如, 蔡文淇, 李炎林, 田代科(193)

责任编辑 蒋巧媛 李莉 周翠鸣 邓斯丽
责任校对 周翠鸣 邓斯丽 李莉 蒋巧媛 王登惠
英文编辑/校对 李莉 周翠鸣 蒋巧媛 邓斯丽 王登惠
封面/版式设计 邓斯丽 蒋巧媛 李莉 周翠鸣 王登惠

期刊基本参数: CN 45-1134/Q * 1981 * m * A4 * 208 * zh+en * P * ¥45.00 * 1200 * 17 * 2024-01

封面说明: 花形态特征,尤其是可育雄蕊数目、花粉散粉单元和花药发育特征在兰科不同分类阶元水平上表现出丰富的多样性,具有重要的分类系统学意义。然而,相对于物种数在26000种以上的兰科家族而言,相关研究资料极为匮乏,仅零星见于200多种兰花的相关报道。本期发表的3篇研究论文,从花器官、组织切片和超微结构等报道了紫纹兜兰的合蕊柱和双雄蕊花药发育、两种玉凤花属植物的合蕊柱和花粉小块的形态及超微结构、云南火焰兰的花形态和单雄蕊花药发育过程,为兰科花结构和花药发育胚胎学特征在物种鉴定、分类系统学、繁殖生物学及保护生物学方面提供了新资料。

照片示:部分兰科植物的花形态 1. 粉叶玉凤花; 2. 云南火焰兰; 3. 紫纹兜兰。照片由李璐提供。相关内容详见本期正文77~112页王乐骋等、陶凯锋等和朱永等的文章。



CONTENTS

Special Subject: Research on National Key Protected Wild Plants

Intraspecific genetic variation within chloroplast genome of a rare and endangered species *Paphiopedilum parishii* (Orchidaceae) GAO Xinzhen, TANG Lu, WANG Yu, SHAO Shicheng, LUO Yan(1)

Characteristics of chloroplast genome and phylogenetic analysis of *Diospyros sutchuensis* with extremely small populations YANG Nan, WANG Ao, ZHANG Zichen, ZHAO Liangcheng(15)

Analysis of chloroplast genome features of endangered and rare plant *Camellia minima* DENG Yongbiao, ZHANG Jin, LAN Lunli, ZHAO Bo(30)

Comparative analysis of chloroplast genomes of two rare *Pecteilis* species (Orchidaceae) WANG Yu, TANG Lu, SHAO Shicheng, MA Changle, LI Jian, LUO Yan(43)

Flower bud differentiation and leaf endogenous hormone changes of *Camellia perpetua* JIANG Haidu, SUN Feifei, QIN Huizhen, TANG Jianmin, WEI Xiao, CHAI Shengfeng(56)

Effects of simulated drought by PEG-6000 on the germination of *Hopea chinensis* seeds under different temperature conditions LIANG Huizi, YANG Jisheng, QIN Yi, PAN Weihu, XIAO Yufei, HUANG Ronglin, WANG Renjie, JIANG Yi, LIU Xiongsheng(68)

Floral morphology and embryological features of anther development in *Renanthera imschootiana* WANG Yuecheng, TAO Kaifeng, ZHU Yong, ZHANG Jin, LUO Yan, LI Lu(77)

Floral structure and gynostemium ultrastructure of two *Habenaria* species with their taxonomic implications TAO Kaifeng, ZHU Yong, WANG Yuecheng, ZHANG Yingduo, LI Lu(89)

Floral morphology and anther development in diandrous orchid *Paphiopedilum purpuratum* with their taxonomic implications ZHU Yong, HUANG Jialin, TAO Kaifeng, WANG Yuecheng, ZHANG Jin, LI Lu(102)

Comparative study on leaf anatomical structures and photosynthetic characteristics of three *Geodorum* species XU Aizhu, JIANG Haidu, PU Qiankun, WEI Xiao, WEI Yujing, LUO Yajin, CHAI Shengfeng(113)

Cytomorphology, physiological and biochemical characteristics of male sterility plant in *Parakmeria omeiensis* YU Daoping, LI Cehong, LI Xiaojie, CHEN Xuling, XIE Kongping(126)

Dynamics of tissue nutrient content in relation to declining seedling growth in *Malaria oleifera* CHEN Qiuping, LI Yunju, LI Yue, XUE Ruijuan, LI Airong(137)

Effects of fertilization on young forest growth and leaf physiological characteristics of *Toona ciliata* var. *pubescens* PAN Junbin, LIU Yuansheng, ZHANG Lu, CHENG Qiangqiang, WANG Jian, JIA Ting, WU Yunyan, GUO Chunlan(147)

Pollination biology of the rare and endangered submerged plant, *Ottelia cordata* WANG Luanfeng, ZHANG Tongtong, XIANG Wenqian, LIANG Huiting, TAN Ke, SHEN Yichun(157)

Ornamental plants of Orchidaceae and their functional groups in Beipan River basin of Guizhou HOU Huanhuan, AN Mingtai(167)

Population structure and number dynamic characteristics of endangered plant *Ormosia hosiei* in Sichuan and Guizhou provinces, China WANG Mingbin, WEI Xiaoli, WEI Yi, WANG Man, YU Dalong, YUAN Gangyi(179)

Review

Advances on taxonomy and breeding of *Saxifraga* Tourn ex L. TANG Shimei, ZHANG Xia, CHEN Qianru, CAI Wenqi, LI Yanlin, TIAN Daike(193)

Cover images: Floral morphology in some orchids. 1. *Habenaria glaucifolia*; 2. *Renanthera imschootiana*; 3. *Paphiopedilum purpuratum*. Cover images are provided by LI Lu. For details, please see the text by WANG Yuecheng et al., TAO Kaifeng et al. and ZHU Yong et al. on pages 77–112.

